

COMPACT  
UTILITY  
TRACTOR  
MODEL YT235



**YANMAR**

---

**YT235**

---

QUICK  
OPERATION  
GUIDE



This Quick Operation Guide is a summary of fundamentals of quick operation and is not a substitute for the Operator Manual. Please review Operator Manual for comprehensive instructions and warnings.



# HOW TO OPERATE YOUR TRACTOR

READ YT235  
OPERATION  
MANUAL

PAGE  
8-1



Parking brake (1)



Cruise Control lever (10)



Diff lock pedal (11)



PTO switch Off/On (5) and  
reverse override switch (9)



# LAMPS & INDICATORS ON METER PANEL

READ YT235  
OPERATION MANUAL



## Start Engine

- 1 Parking brake set and locked
- 2 Range shift lever [N]
- 3 4 Foot off of both drive pedals
- 5 PTO switch [OFF]
- 6 Turn the Key switch [START]

## PTO Operation

- 8 Select the desired position of the PTO select lever [MID/BOTH/REAR]
- 5 PTO switch [ON]

## Mid PTO Reverse Override

- 9 Push and hold the reverse override switch
- 4 Press the reverse pedal

\* PTO select lever should be in the MID or MID/REAR position.  
\*\* When releasing the reverse pedal, PTO Reverse override is canceled. Push the PTO reverse override switch again to reactivate before pressing the reverse pedal.

## Engine Speed Control

- 7 Adjust the throttle control lever

## Travel Speed Control

- 2 Stop the tractor to select the range shift lever [1/2/3]
- 1 Parking brake released
- 3 4 Press or release the drive pedals to increase or decrease the travel speed

## Cruise Control Operation

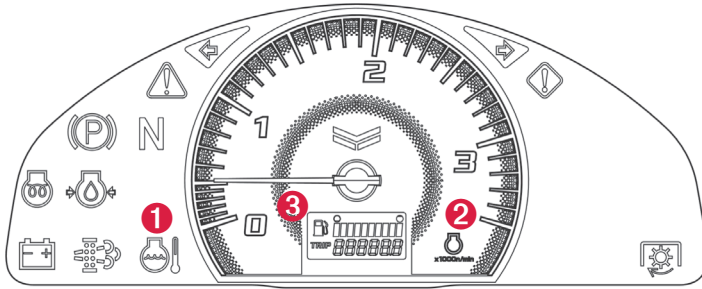
Regulates forward speed of the tractor at a preset speed.

It will not apply to the reverse.

- 3 Depress the forward drive pedal
- 10 Lift up the cruise control set lever to activate
- 1 3 Press the forward drive pedal again or the brake pedal to deactivate

## Differential Lock

- ii Depress the differential lock pedal



READ YT235  
OPERATION MANUAL



## 1 Coolant Temperature Lamp



**Stays Green:** The engine is in normal operating range.

**Green Flashing:** The engine is close to overheating.



**Turns Red:** The current coolant temperature is too high. Stop and check for debris blockage on radiator.

## 2 Tachometer

Indicates the current engine speed in increments of 100 Revolutions Per Minutes (rpm).

- Engine Rated Speed: 2800 rpm
- Rear PTO Rated RPM 540 rpm at Engine 2600 rpm

## 3 LCD (Fuel gauge/Hour meter/Error code)

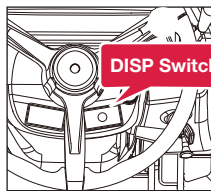
**Fuel gauge:** Indicate fuel level. When the remaining fuel becomes extremely low, the icon will start blinking.

**Hour meter:** Always check the current engine operating hour for next service intervals.

READ YT235  
OPERATION MANUAL



## 4 Error codes



1. Error display      2. Normal display



Push DISP switch (1)

Push DISP switch (2)

Push DISP switch (3)

**Error code:**

1. When an error occurs, the LCD (3) indicates "Error" (Alternately switches with the normal display). Either of the panel icons will blink.
2. Press the "DISP switch" (4) three times. The error code will be displayed by being divided into three parts (For example: 28 000b2.05). Contact local YANMAR dealer for technical assistance.

## Lamps and Indicator Lights



**Warning lamp**  
Issue(s) is happening.  
See "Error code".



**Caution lamp**  
Electrical issue(s) is happening.  
See "Error code".



**Parking brake lamp**  
Indicate parking brake is engaged.



**DPF lamp**  
Request to perform DPF regeneration.  
See back page.



**Glow plug light**  
Indicate engine glow plugs are working for cold start.



**PTO lamp**  
PTO switch is in the "ON" position.



**Oil pressure light**  
Engine oil issue is happening.



**Neutral lamp**  
Range shift lever is in the Neutral position.



**Charging light**  
Battery charging issue is happening.

**Remark:** When turning the Key switch ON, all the lamps turn on once and these lamps include lamps that are not used on the Model YT235.

## Exhaust Filter (DPF) Regeneration

### Reset regeneration procedure for the exhaust filter (DPF).

Perform reset regeneration of the exhaust filter to clean the exhaust within the first 50 hours and then every 100 hours afterward. (DPF Diesel Particulate Filter)

When reset regeneration of the exhaust filter is required, a regeneration request is output **automatically with the three notification functions.**



#### NOTIFICATION

### 1 Warning

The exhaust filter regeneration request warning will be displayed on the meter panel. (Reset generation)

#### NOTIFICATION

### 2 Notification Lamp

The exhaust filter regeneration switch notification lamp will flash.



Exhaust filter regeneration switch (with lamp).

#### NOTIFICATION

### 3 Alert sound



The exhaust filter regeneration switch notification will flash.

## PERFORM THE FOLLOWING ACTIONS WHEN THERE IS A RESET REGENERATION REQUEST.

**PRESS AND HOLD the exhaust filter regeneration switch for three or more seconds.**



**The lamp will turn on and the buzzer will stop. The exhaust filter (DPF) will start being regenerated.**

\* The lamp will turn off when regeneration ends.

\*\*Normal tractor operation is okay during regeneration.

### Reference

- Before starting regeneration, make sure the tractor will be operated during the regeneration or can be parked in a safe place until the regeneration is complete.
- Reset regeneration will end in about 30 minutes, the time until regeneration ends depends on the outside temperature.

#### Regeneration will not be started under the following conditions:

1. When the engine cooling water temperature is low.
2. When the temperature in the exhaust filter is low.

YT235 OPERATION MANUAL



Yanmar Co., LTD.  
Head Office  
1-32, Chayamachi, Kita-ku, Osaka 530-0013, Japan

[www.yanmartractor.com](http://www.yanmartractor.com)

Yanmar America Corporation  
101 International Pkwy, Adairsville, GA 30103  
tel: 770.877.9894



The information in this brochure is accurate as of the date of printing and subject to change. All rights reserved by and belong to Yanmar®.  
©2018 Yanmar America Corporation. 1A8425-95951-10/18

Yanmar has a corporate policy of continuous product improvement and development; therefore data, specifications, and warranty are subject to change without any advance notice. There may be differences between the specifications and illustrations contained in this publication and the actual equipment. Equipment components produced by other manufacturers may be shown in photographs in this publication for the purpose of illustration only and is not intended as an endorsement of that particular equipment or its suitability. Inspect equipment before using it and be sure it is operating properly. The product depictions are not meant to be used or relied upon as a substitute for the safety and use information that is published in the respective operator's manual. Before operating a machine, read, understand, and follow all instructions of the manual and on the machine. Yanmar disclaims all representations, express or implied, or any liability from the use of this publication.