

SUBCOMPACT,
STANDARD &
HEAVY DUTY

GRADER BLADES

FEATURES

Versatile usage

Adjustable angles

Quick hitch compatible



Versatility you need to grade, scrape and backfill using Yanmar grader blades, equipped for many jobs and terrains.

YANMAR SUB-COMPACT REAR GRADER BLADE YGB104

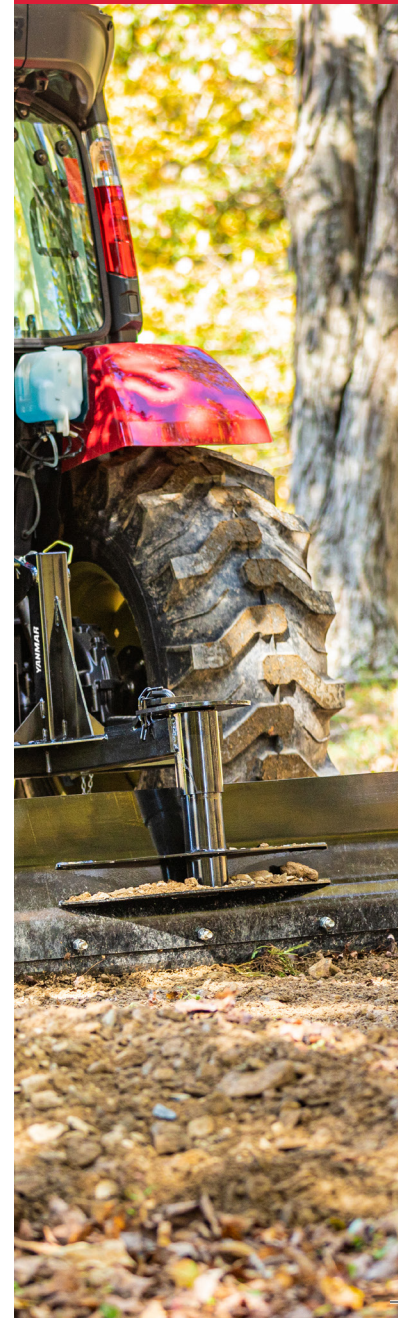
The Sub-Compact Rear Grader Blade excels at grading or scraping gravel, sand, dirt and snow. With this 4' implement, customers can level or backfill areas with ease. Adjustable blade angles allow the operator to push and place materials in any direction.

YANMAR REAR GRADER BLADES YGB205, YGB206, YGB207

The Rear Grader Blade is the ideal implement to handle farm and ranch grading and scraping needs. Sand, gravel, and snow are no match for this implement with its pull-pin design, which lets the customer change the blade angles to suit their needs.

YANMAR HEAVY-DUTY REAR GRADER BLADES YGB306, YGB307

The Heavy-Duty Rear Grader Blade effectively levels and scrapes gravel, sand, dirt, and snow. Our 6' and 7' models feature a reinforced and adjustable blade which also offsets to the left or right to allow for closer grading on one side while providing tire clearance of an obstacle. These units are perfect for maintaining draining ditches and roadsides.



Yanmar Grader Blades Specifications

GRADING, SCRAPING & LEVELING

MODEL	4' SUB-COMPACT REAR GRADER BLADE	5' REAR GRADER BLADE	6' REAR GRADER BLADE	7' REAR GRADER BLADE	HEAVY-DUTY 6' REAR GRADER BLADE	HEAVY-DUTY 7' REAR GRADER BLADE
ITEM #	YGB104	YGB205	YGB206	YGB207	YGB306	YGB307
Tractor horsepower required	15-32	20-45		25-45	20-50	25-65
Implement type	Grader Blade					
Approx. weight	178 lbs.	197 lbs.	213 lbs.	232 lbs.	332 lbs.	348 lbs.
Working width	48"	60"	72"	84"	72"	84"
Height of mold board	12.5"	15"				
Mold board thickness	0.25"					
Hitch	Limited Cat 1	Cat 1				
Quick hitch compatible	Yes					
Cutting edges	3/8" x 6" high carbon heat treated blades (replaceable)					
Angling	5 FWD/ 5 REV up to 45 degree right or left					